



---

Government & Education | Economics & Public Finance | Health & Human Services | Nonprofits & Communities

# **Marbletown Fire and EMS Operations**

**An Evaluation of Existing Conditions and Opportunities  
for the Future**

# Presentation Outline

---

- Overview of the project
- Current state of MFAU (As of May, 2021)
- Action steps for EMS
- Current state of Fire Districts
- Options for Fire Service
- Next steps

# Project Overview

---




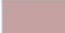

- Project launched January 2021
- Initial data request during February
- Site visit and interviews in March and April
- Interim report related to MFAU completed in May
- Focus on Fire Districts in June and July
- Options presented to Fire Districts in August
- Draft of final report shared in September
- Final report completed October 4th

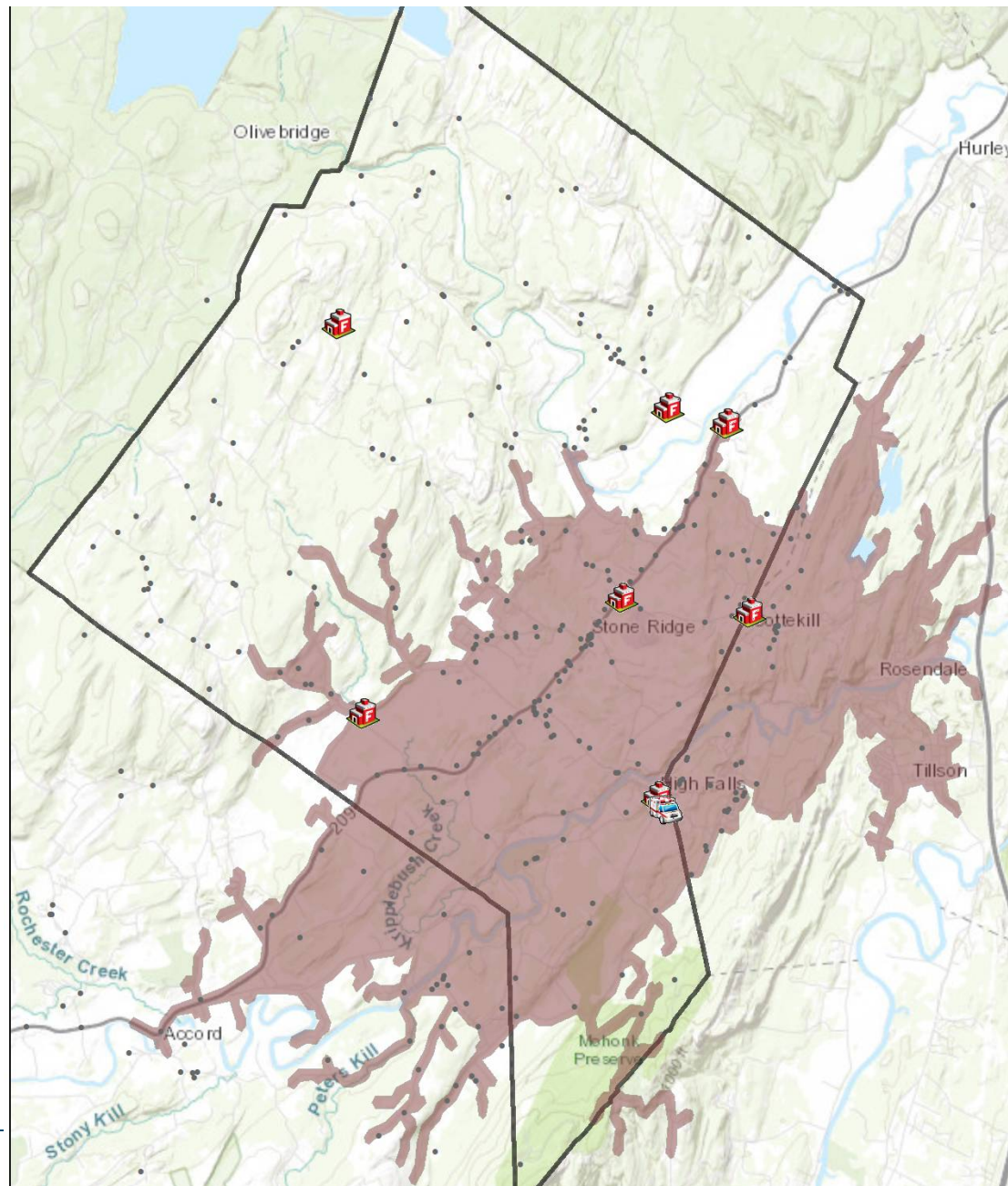
## Current State of MFAU

---

- Currently, handling BLS responses and transports effectively
- Long-term trend is 1.5 calls per day
- Recent very high coverage rates
- Residents and leaders are happy
- Use a mix of 25% volunteers, 75% paid to meet the demand
- Operating budget for 2020 was about \$350k and had \$313k in revenue.
- Budget for 2021 is likely to go up, but revenue is not likely going to keep pace

## Legend

-  Ambulance
-  Fire Departments
-  2020 MAFU
-  10 Minute Travel
-  Marbletown



# Options Going Forward

---

- Town has chosen to develop an ambulance district and contract for service
- Long-Term Concerns
  - Supply of staff for MFAU
  - Location of ambulance station
  - Provision of advanced life support in the community
  - Succession planning for leadership at MFAU

# Current State of Marbletown Fire Service

---

- Full of dedicated volunteers
- Volunteers have restricted availability, but are, as a town, able to currently meet manpower needs
- Daytime availability is a particular challenge
- Number of volunteers a concern in some districts
- Living out of their district is common
- Age of volunteers is reported higher than population
  - Stone Ridge reports to be an exception
- Recruitment of volunteers is minimal for most
- Districts have appropriate numbers and types of equipment, but some are nearing end of service life
- ISO Ratings for most departments lead to higher insurance premiums

# Current State of Marbletown Fire Service

---

- Cooperation between departments is not universal, although each department has strong bonds with at least one other
- Some employers, such as the town, allow employees to answer calls when appropriate
- Districts need to consider if current operations are bringing greatest possible benefit to community
- Most members recognize the challenges and have varied views on the answers
- If you were to design a system from the ground up, it wouldn't look like this one

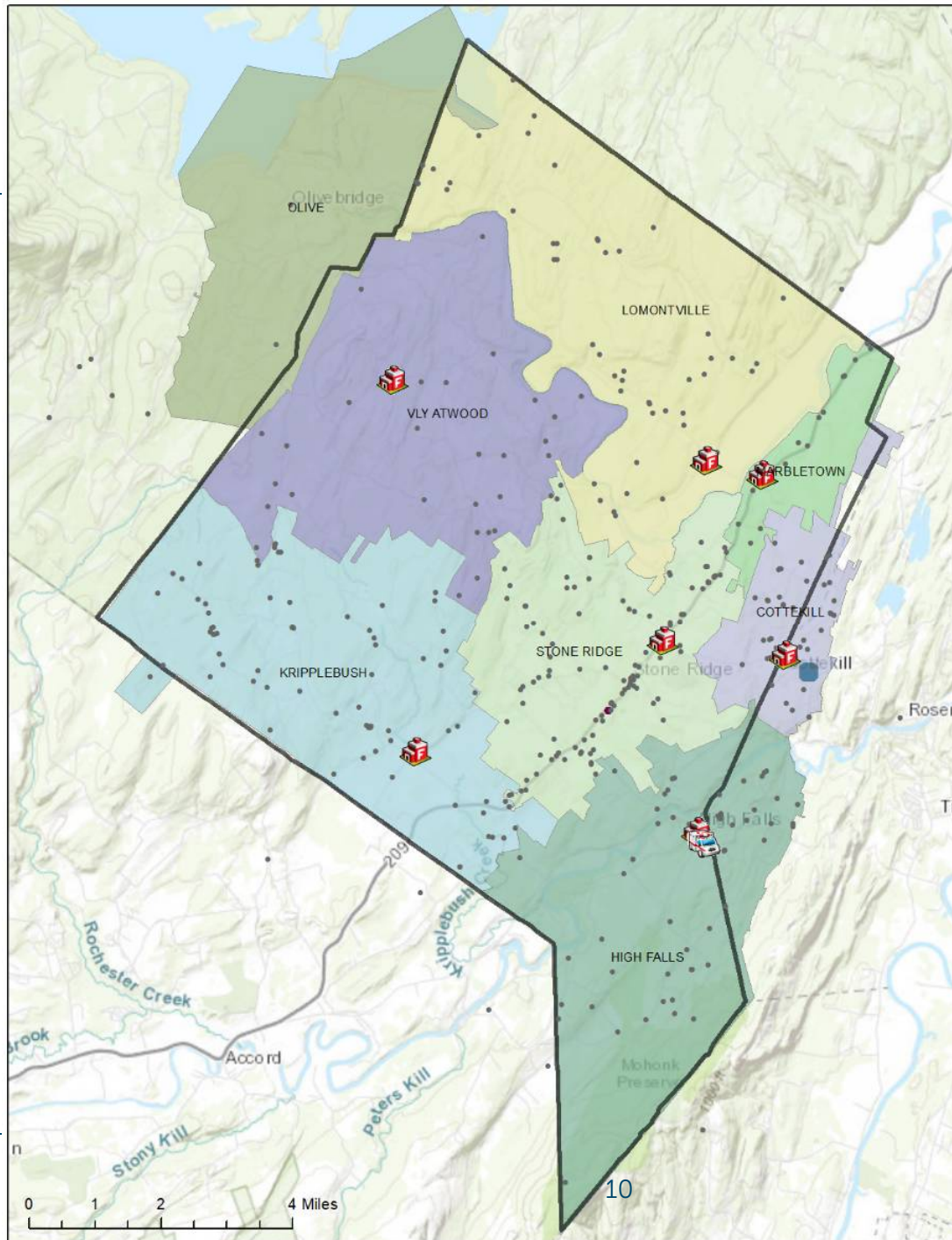


	Cottekill	High Falls	Kripplebush*	Lomontville	Marbletown	Stone Ridge	Vly-Atwood**	Total
Total Active Volunteer Personnel	12	17	unknown	9	5	41	NA	84
Engines	1	2	2	2	1	2	1	11
Tankers	1	1	0	1	1	1	1	6
Annual Calls For Service	91	96	122	51	26	246	81	713
ISO Rating	8B	04/4y	unknown	8B	9	8B	NA	
Budget (1,000s)	\$135	\$337	\$154	\$130	\$78	\$373	\$59	\$1,266
Tax Rate (per \$1,000)	1.66	1.44	0.74	0.73	1.82	1.57	0.37	N/A
Estimated Population	400***	1,350***	1,100	1,100	220	1,000	975	5,500

\* Kripplebush chose not to participate. All data is from public sources.

\*\* Vly-Atwood stopped operations on June 30, 2021.

\*\*\* Estimated population for Cottekill and High Falls includes Rosendale. Total in table is for Marbletown. An estimated additional 825 residents live in Rosendale.



## Legend



Ambulance



Fire Departments

2020 Call for Service

● 1 to 5

● 6 to 11

● 12 to 35



Marbletown

## Fire Districts



COTTEKILL



HIGH FALLS



KRIPPLEBUSH



LOMONTVILLE



MARBLETOWN



OLIVE

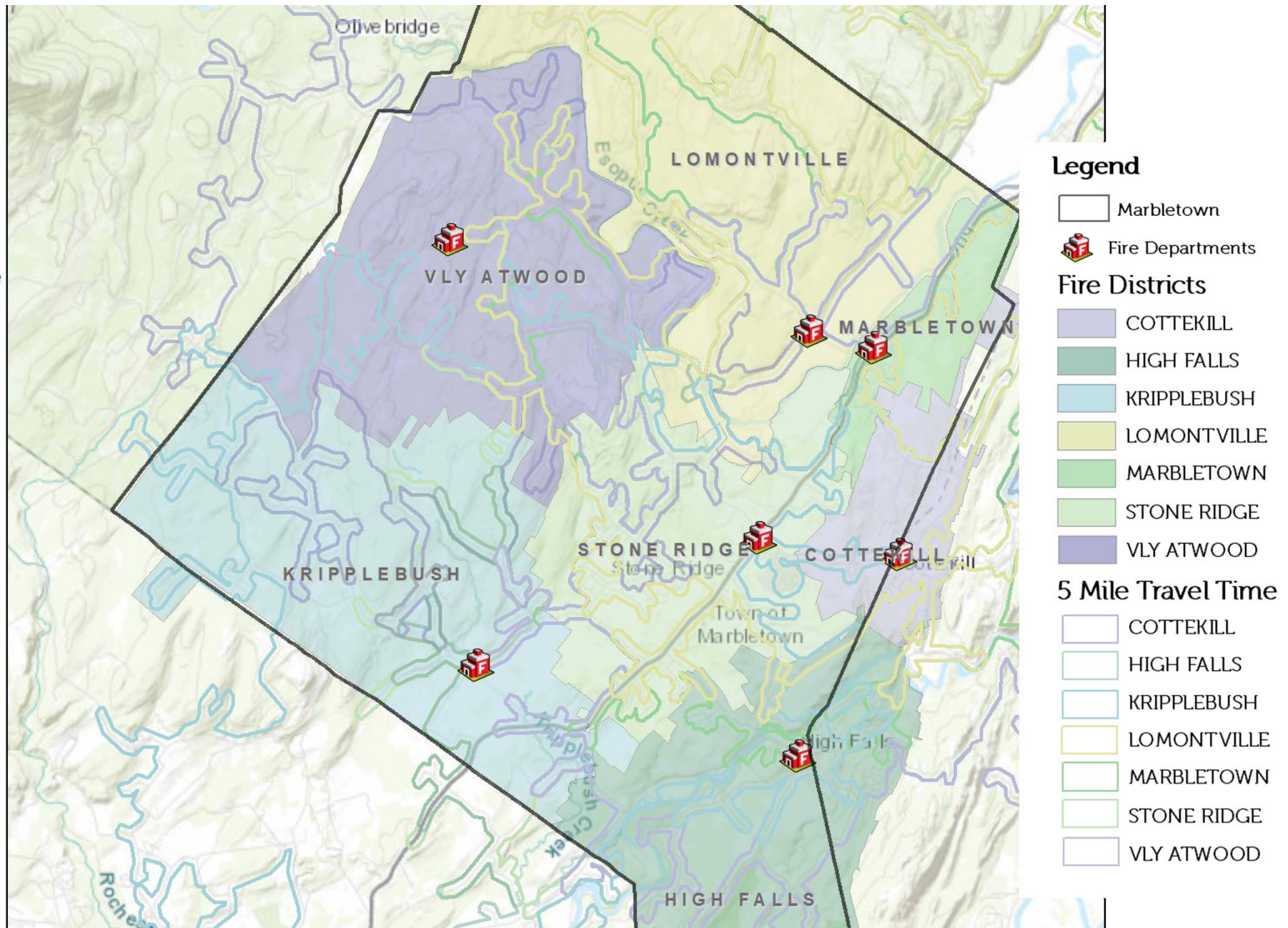


STONE RIDGE

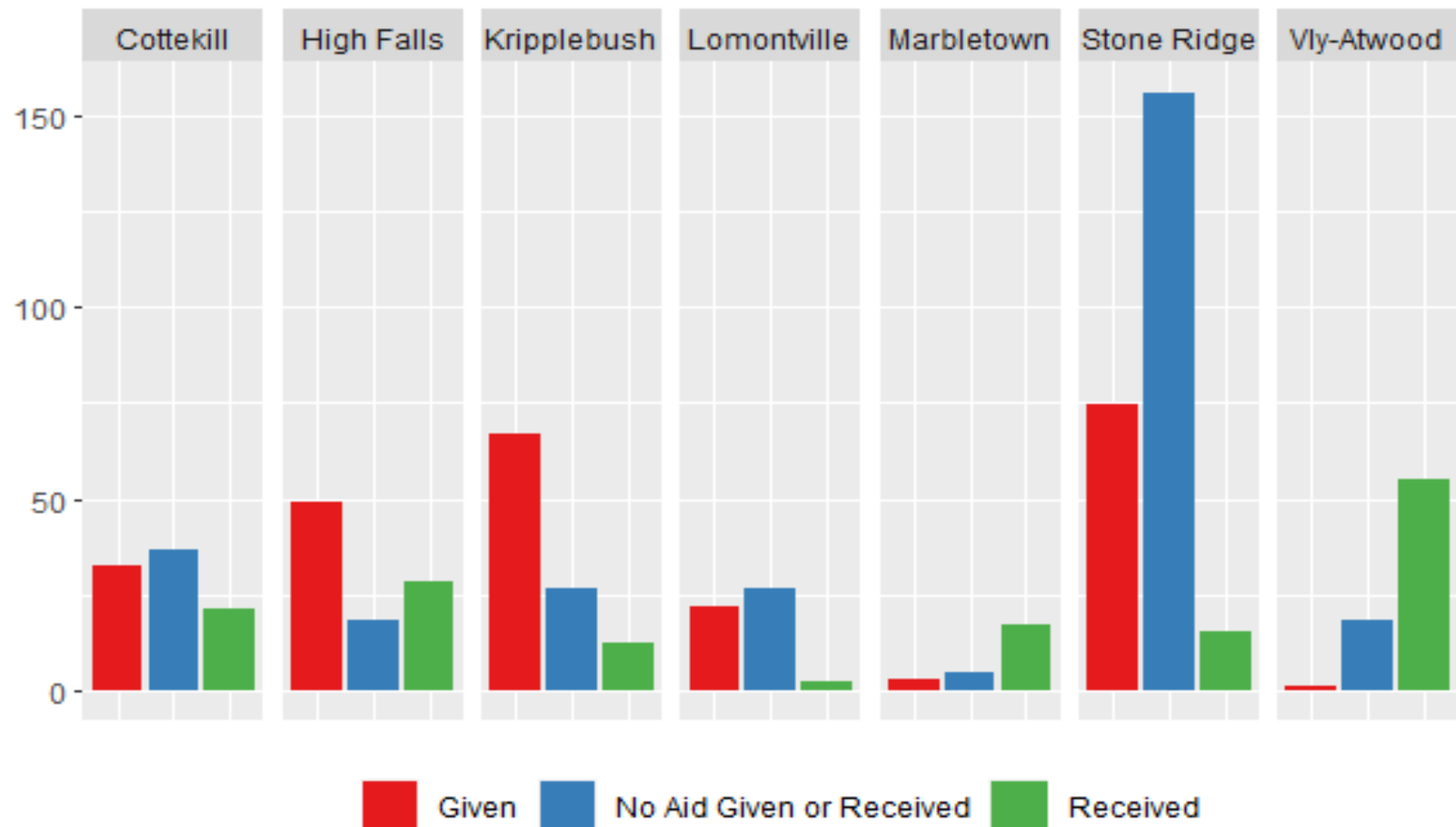


VLY ATWOOD





# Exchange of Aid (NFIRS Recent Average)



# Options Going Forward

---

- Merge Fire Districts
  - Similar process, regardless of number of districts involved
  - Create a Single District from Six
    - Some operational changes, but could keep existing companies
    - Eliminate up to 30% of apparatus – mostly older apparatus
    - Reduce some expenses
    - Estimated property tax rate of \$0.986 per thousand. Savings for most residents of between \$125 and 225 a year. Vly-Atwood and Lomontville areas would see an increase of about \$168 and \$72 per year.
    - Would need to address LOSAP and capital needs ASAP
  - Create (or Keep) Multiple Districts
    - Example would be merge Cottekill, Lomontville, Marbletown, Stone Ridge and Vly-Atwood into one district
- Expand Sharing and Coordination
- Develop Plan for Recruitment and Retention
- Consider trigger for Paid Staff

## Next Steps for Town Board

---

- Complete Creation of Ambulance District
- Consider non-financial EMS needs such as workforce development, succession and location
- Encourage and support fire districts towards implementation of a consolidation
- Support other activities such as recruitment and retention and expanded sharing/coordination
- Look at ARPA or grant funding to support implementation