



# Consensus Commission Meeting

August 22, 2014

# Today's Objectives

---

- Update on stakeholder interviews and focus groups
  - Key themes
  - Schedule for completion
- Update on baseline data collection and analysis
  - Key trends, review of data sources
  - Who does what?
  - How much does it cost?
  - What variation do we see countywide?
  - Differences among localities

# Interviews and Focus Groups

---

- Met with reps of 15 local governments to date
  - Offer overview of process, timeline, goals
  - Solicit feedback on existing efforts, concerns, opps
- Key themes to emerge thus far
  - Plethora of shared services – both formal and informal
  - Budgetary constraints making for tough decisions
  - The public engagement challenge
  - Local governments = “personal touch,” higher service
  - Some skepticism regarding process

# Baseline Data Collection & Analysis

---

- CGR is well into the baseline data collection and analysis phase
  - Remember, the objective of this phase is to establish a common knowledge base / information foundation for the Commission and broader community
  - With a shared knowledge base, we can begin to develop and analyze options

# Baseline Data Collection & Analysis

---

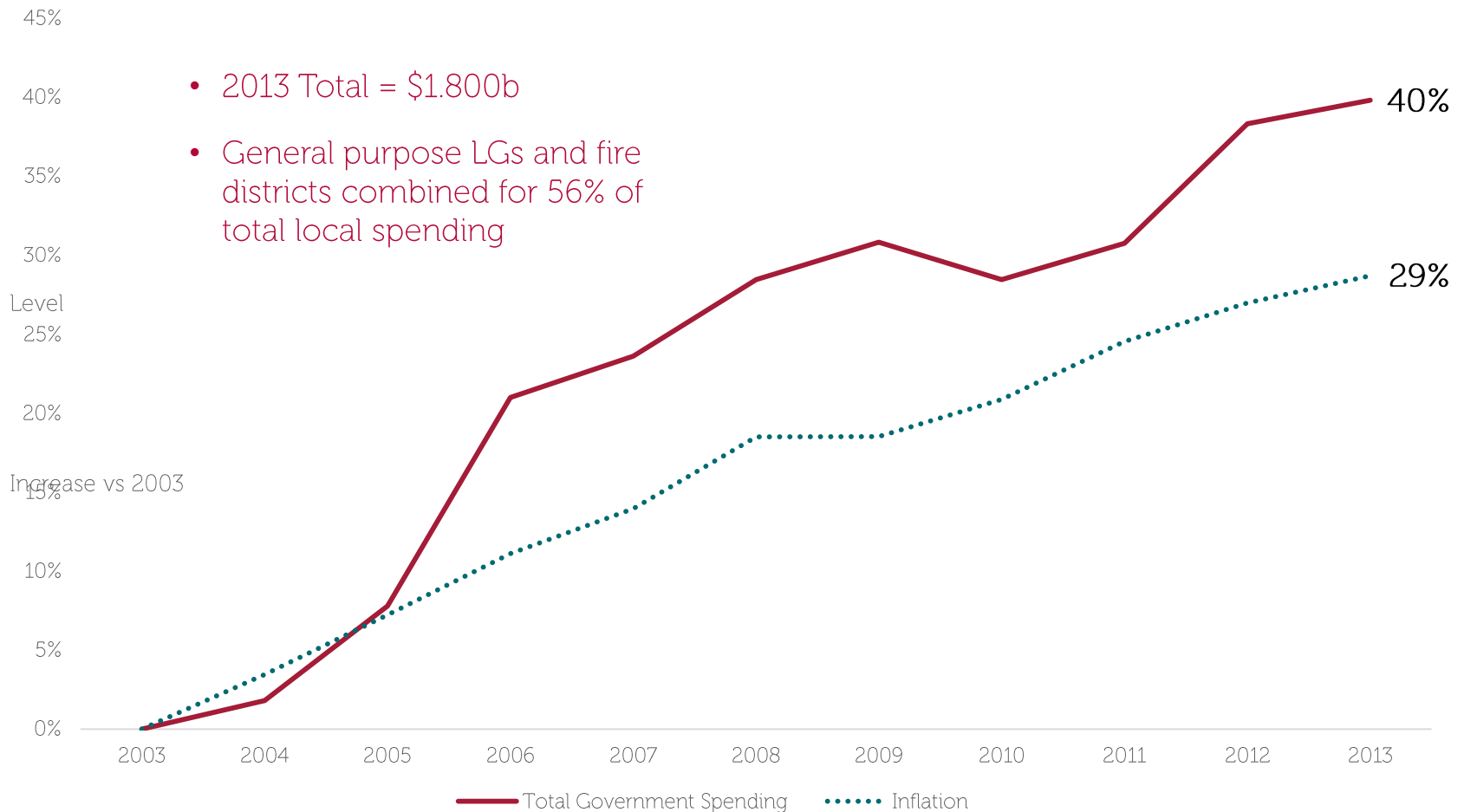
- Data sources reviewed to date
  - Municipal budgets for the current FY
  - Final exp / rev reported to OSC (2003-13)
  - Service delivery menus for each local government
  - Overlapping tax rate structure for each local government
  - Governmental facility deployment
  - Fire coverage boundaries
  - Police coverage boundaries
  - Countywide population density

Q:

How has total local government spending changed in Onondaga County over the past ten years?

# Baseline Data Collection & Analysis

Total Government Spending vs. Inflation



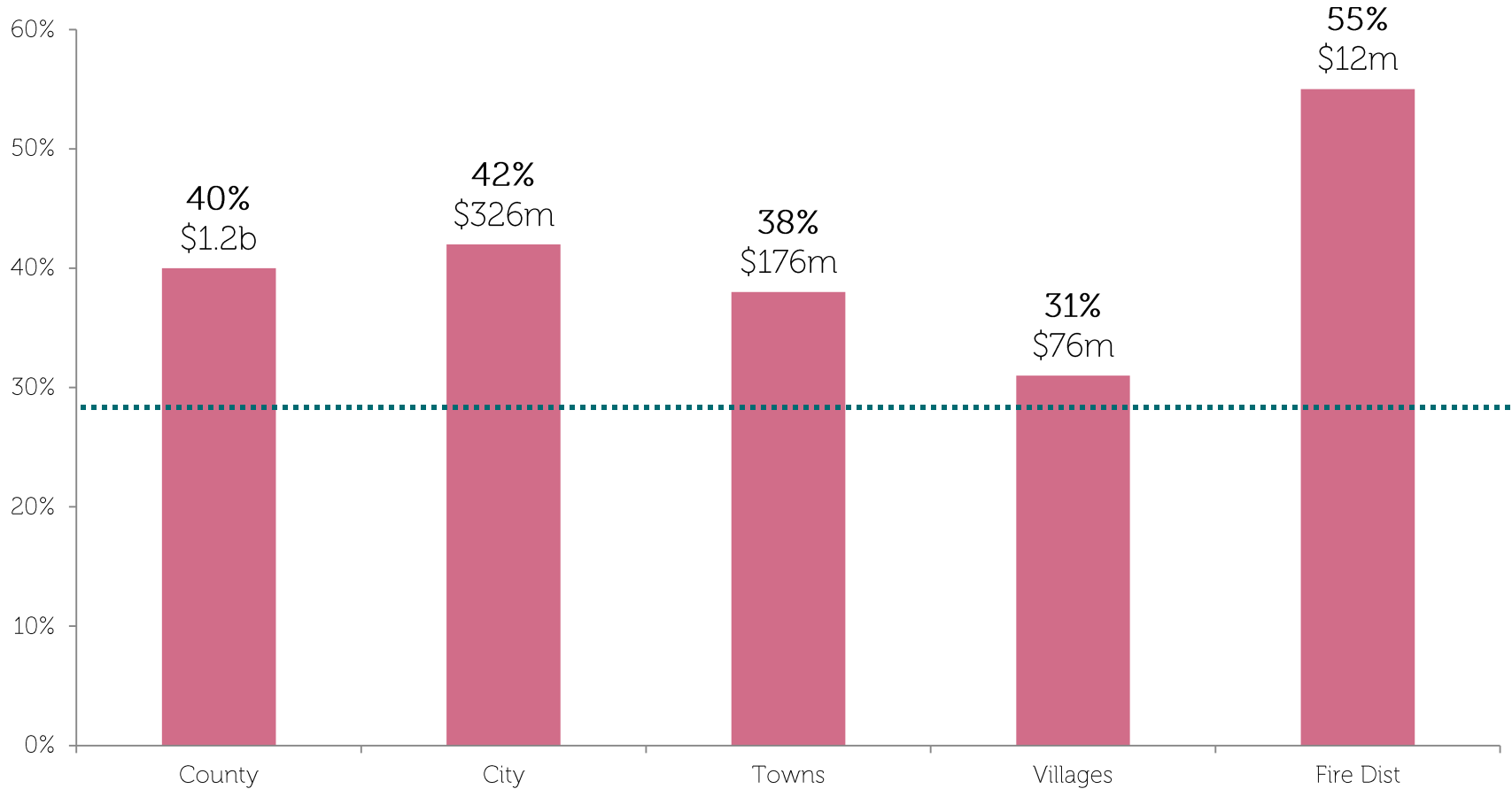
Q:

How have different levels of government changed over the past ten years?



# Baseline Data Collection & Analysis

Increases by Level of Government, 2003-13  
Note: Most recently reported data used for non-reporting jurisdictions

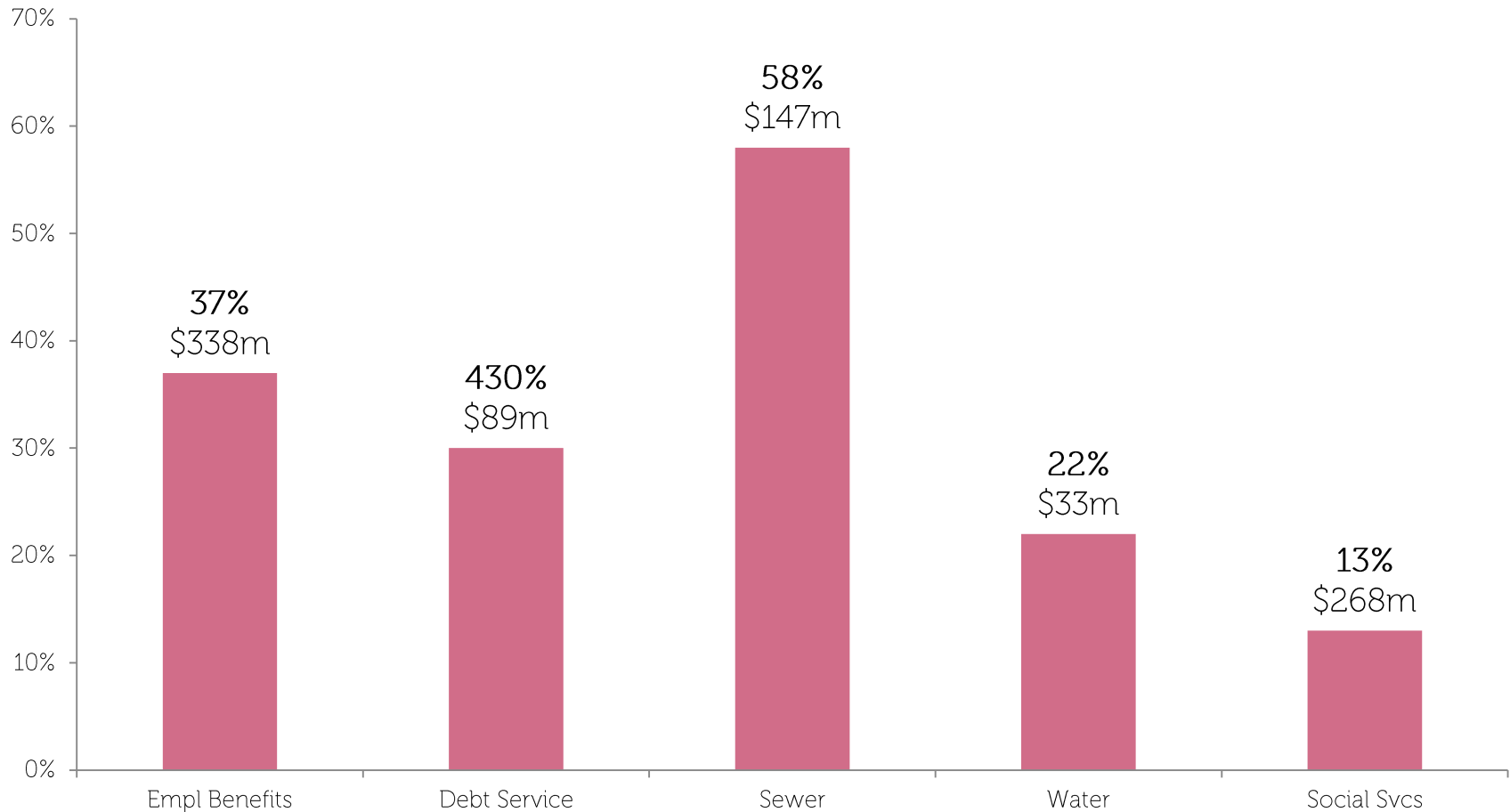


Q:

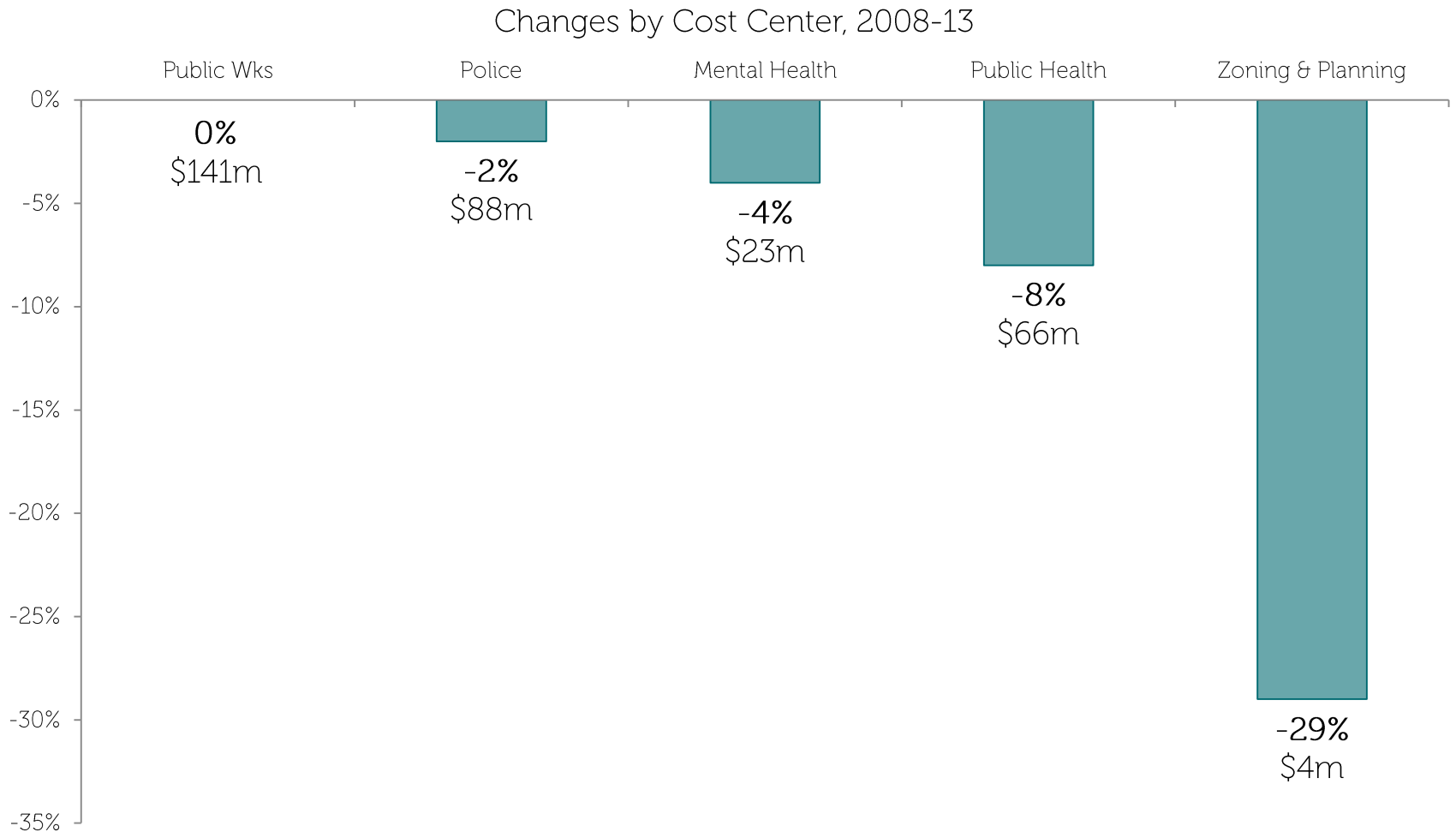
How has spending in individual cost centers changed over the past five years?

# Baseline Data Collection & Analysis

Changes by Cost Center, 2008-13



# Baseline Data Collection & Analysis

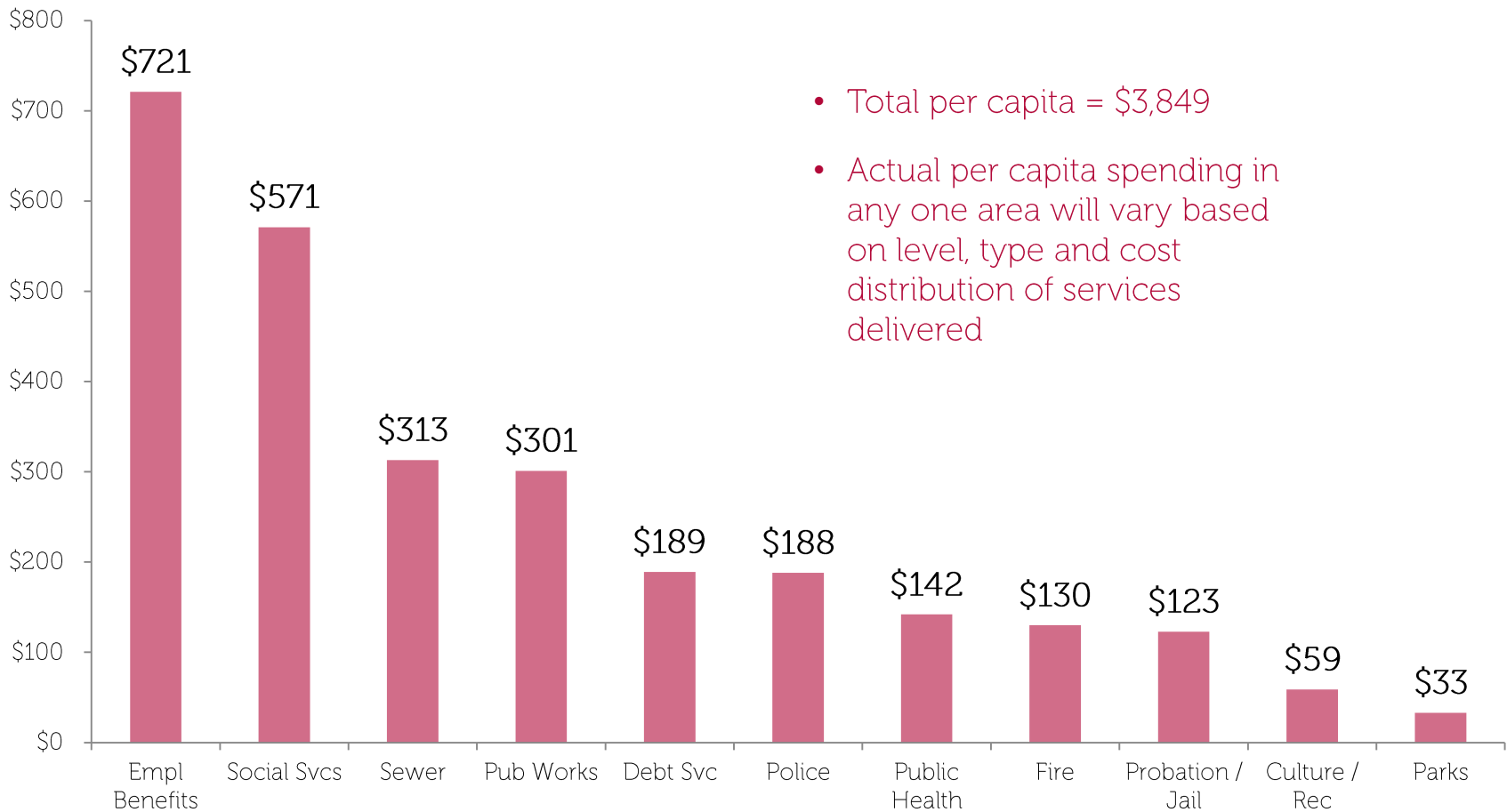


Q:

How much do individual cost centers contribute to the countywide spending “pie”?

# Baseline Data Collection & Analysis

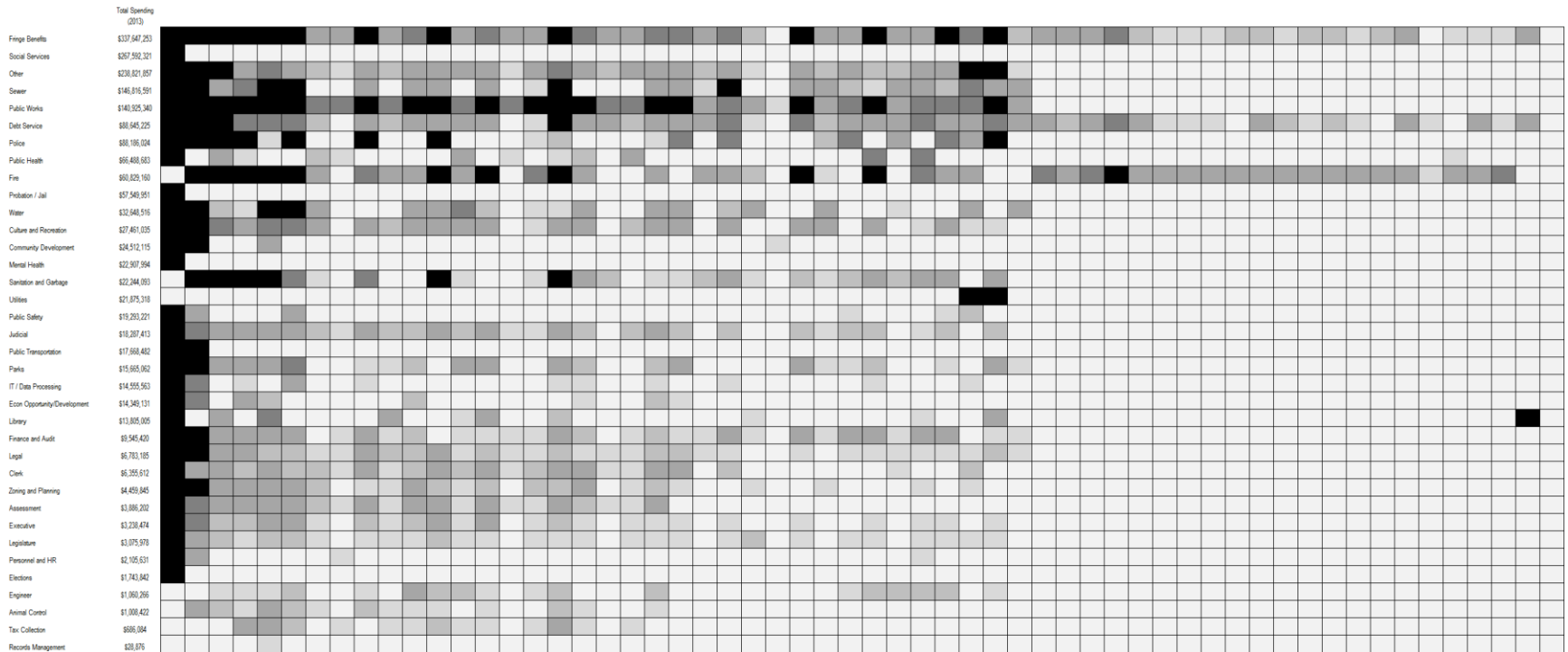
Countywide Average Cost Per Capita, 2013



Q:

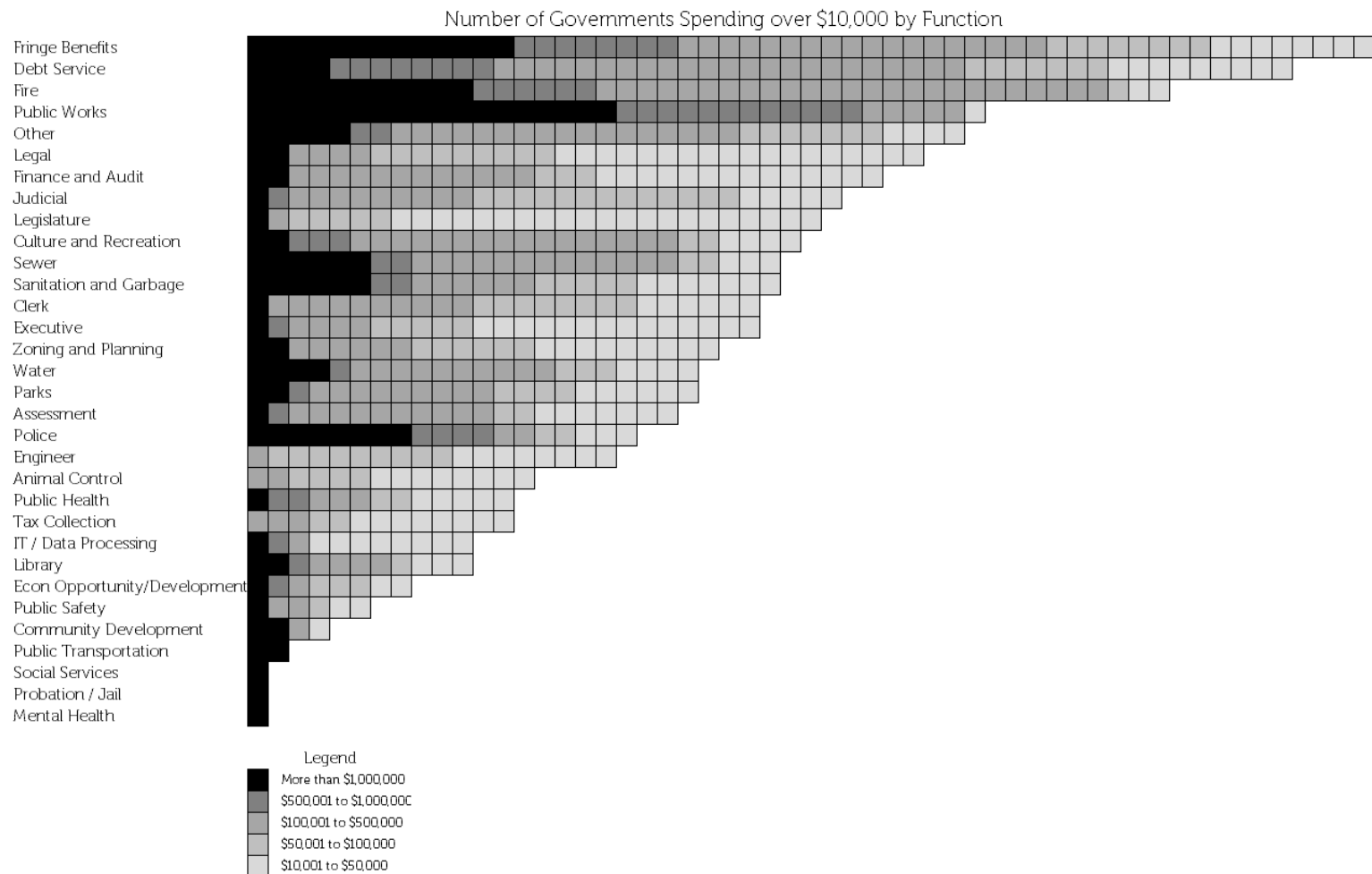
How are we standardizing data for the baseline review, and what's the purpose?

# Baseline Data Collection & Analysis



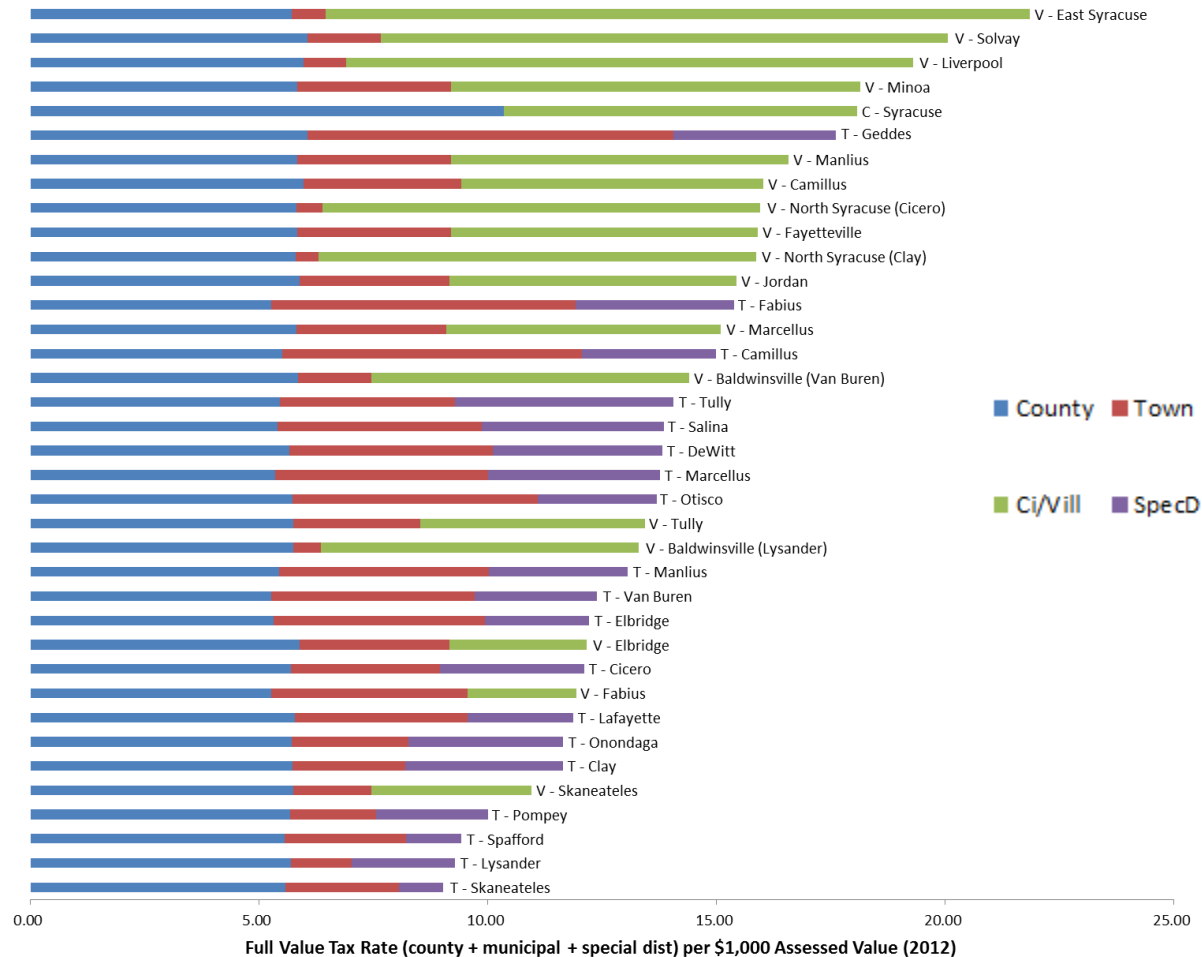


# Baseline Data Collection & Analysis



# Baseline Data Collection & Analysis

Full Value Tax Rates (excluding schools), 2012

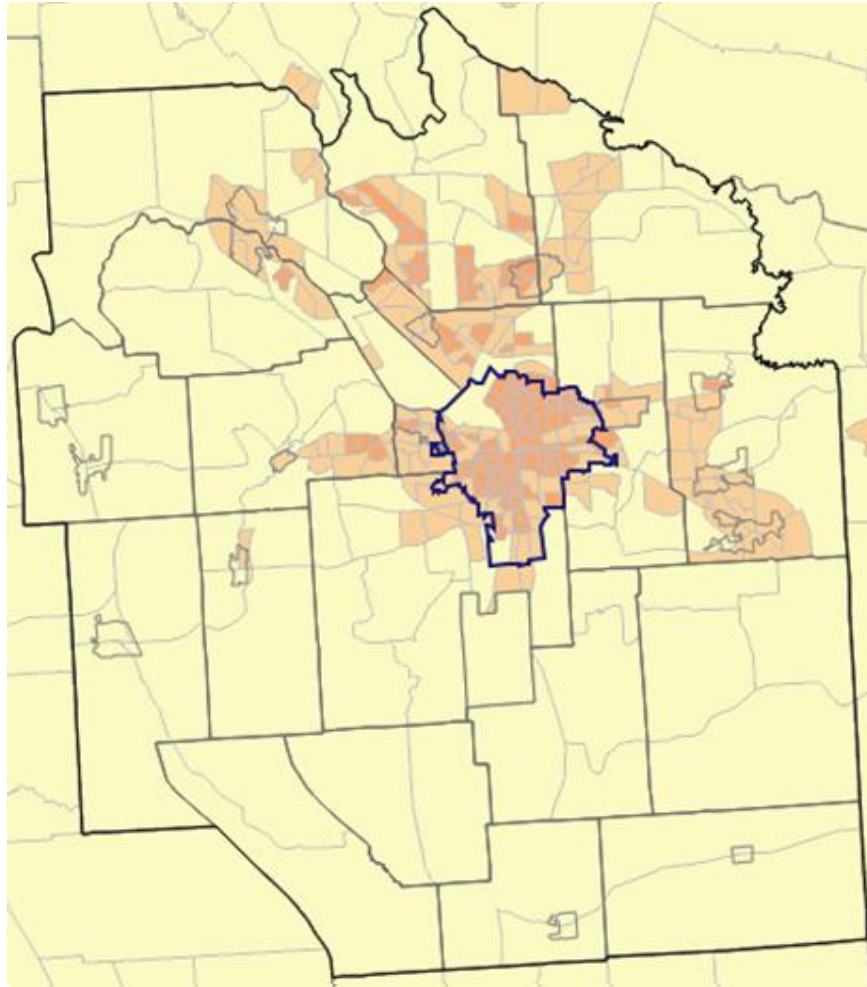


Q:

Beyond spending data, what other elements reflect what (and how) services are delivered?

# Baseline Data Collection & Analysis

---



Q:

What are our immediate next steps in completing the Baseline Data Collection & Analysis?

# Baseline Data Collection & Analysis

---

- Finish data standardization across governments
- Develop “municipal profiles”
  - Services, exp / rev summaries, tax rates, unit cost calculations
- Develop “service profiles”
  - Summaries of major services delivered across the county, the range of approaches / structures used to deliver them, and key elements that would impact any options; add workforce data
- Continue meeting with reps of all local governments to inform muni / service profiles

# Sample Service Profile Data | Police

